

Tom Dixon.

INDUSTRIAL LANDSCAPE

Designer Collection by

ege[®]

THE URGE TO EXPLORE SPACE

Contents

5	Intro
6	Smoke
12	Wash
16	Track
20	Tide
24	Blur
28	Brick
36	Crack
41	Collection overview
42	Colour palettes
43	Recolour options
46	Collection mix inspiration
48	All the details
49	Technical specifications





The designer

Tom Dixon (OBE). Born in 1959. Self-taught British Designer. Creative Director of the design brand "Tom Dixon" and Design Research Studio that specialises in high concept interiors, large scale installations and architectural design. Museums across the globe have awarded and acquired some of his work, including MoMA, NYC and Centre Georges Pompidou, Paris. With a commitment to innovation and a mission to revive the British furniture industry, he is inspired by the nation's unique heritage to create extraordinary products for everyday use.

The Industrial Landscape collection

London is the departure point for the collection – and for Tom Dixon a whole world of inspiration. Perhaps not the prettiest, nor the most glamorous, but certainly one of the most characterful cities in the world.

Gritty backdrops of railways, tunnels, of factories, workshops and warehouses. Materials so prevalent that they make a huge impact. Surfaces - cracked paving stones and brick blocks make up the crumbling industrial landscape while the massive tidal River Thames splits the city in two, and new reflective glass towers begin to dominate the skyline.

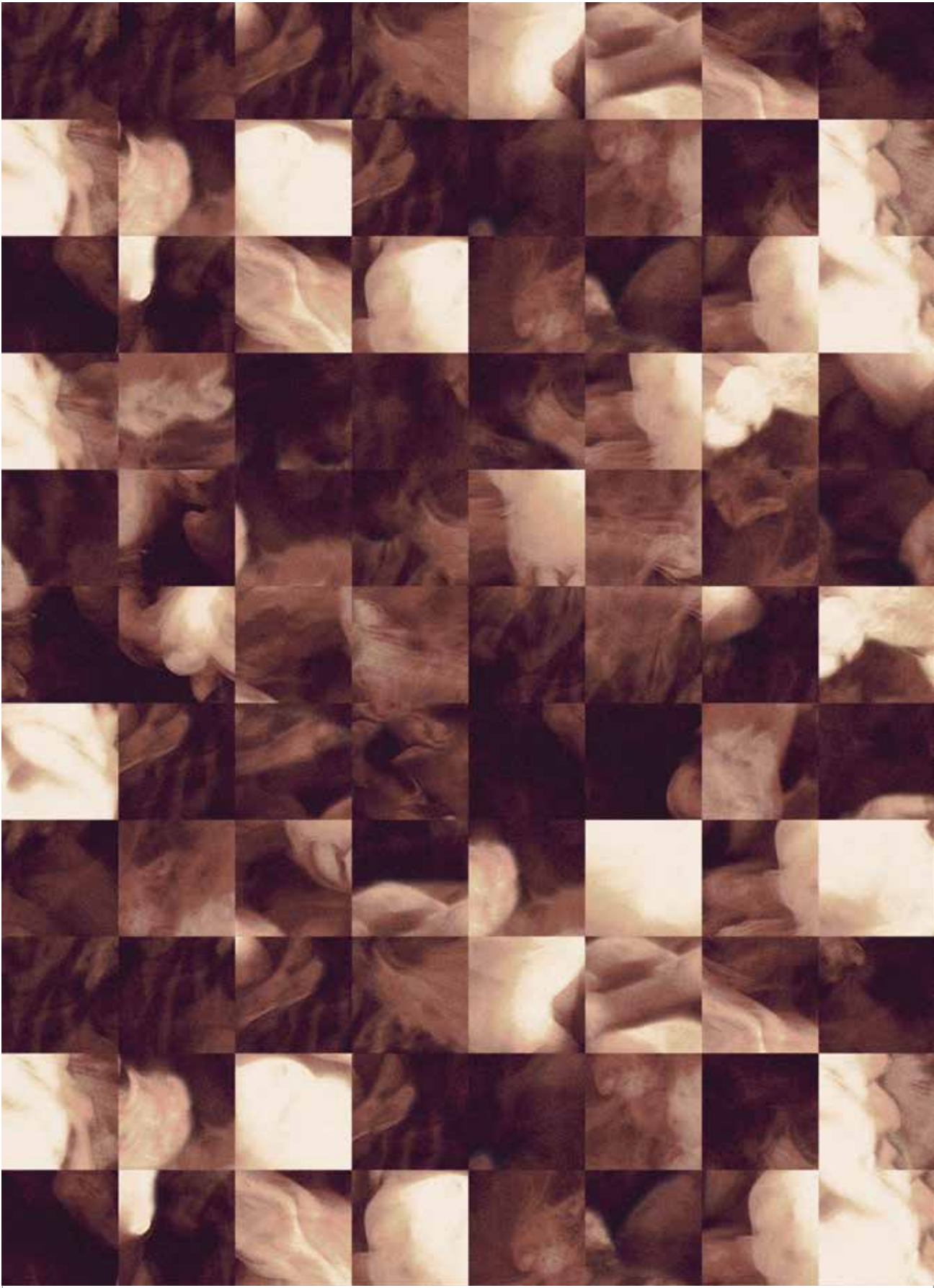
There is a kind of beautiful pattern of time on a grimy city that has lived a few lives. As materials break, they are repaired creating a new pattern that has its own aesthetic; deconstructed bricks, steel tracks, crazy paving and the grey muddy water of the Thames. A series of patterns and textures that come straight from the building or the erosion process.

Each of the seven designs is available as tiles or broadloom that transform into different expressions reinterpreting the rough, raw everyday surfaces of the London cityscape that are so familiar to Tom Dixon.

smoke

The coal-powered city with its rich industrial history, production and manufacture.

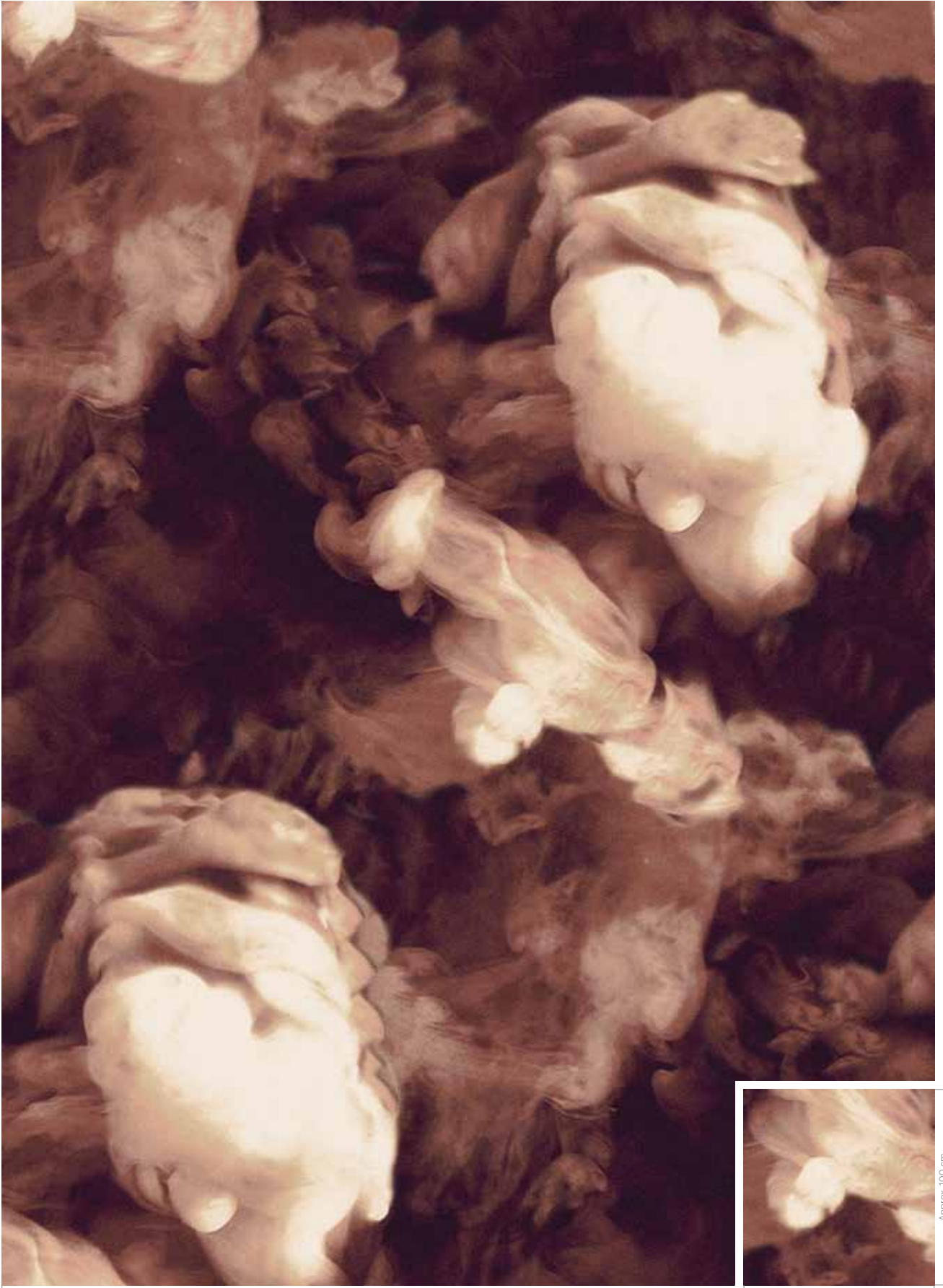




384 cm



No recolour possible



400 cm

Approx. 100 cm

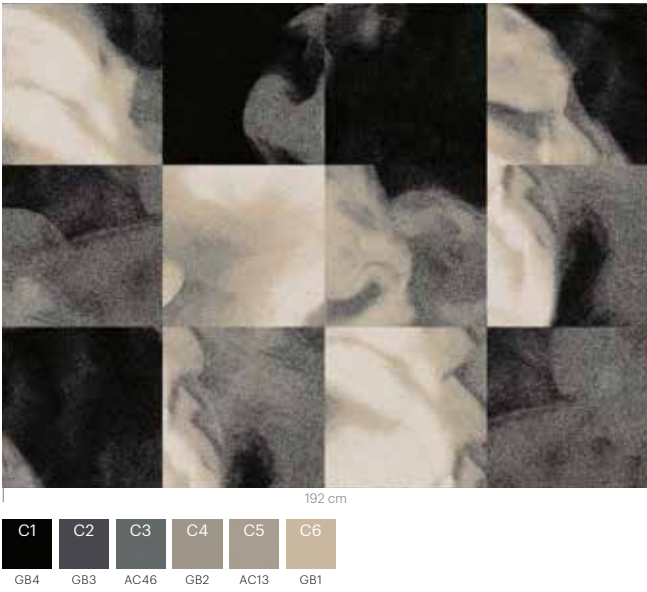
Approx. 100 cm



No recolour possible

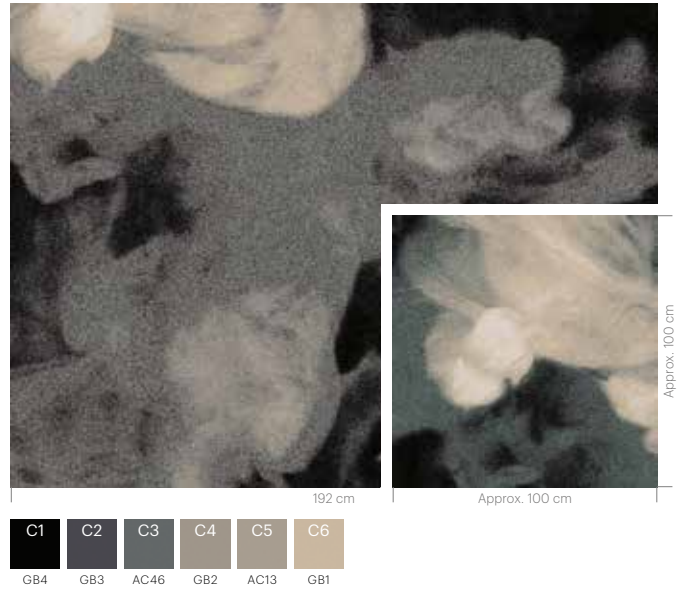
RFM52952270 SMOKE
Installation example 4 x 3 tiles

K5295



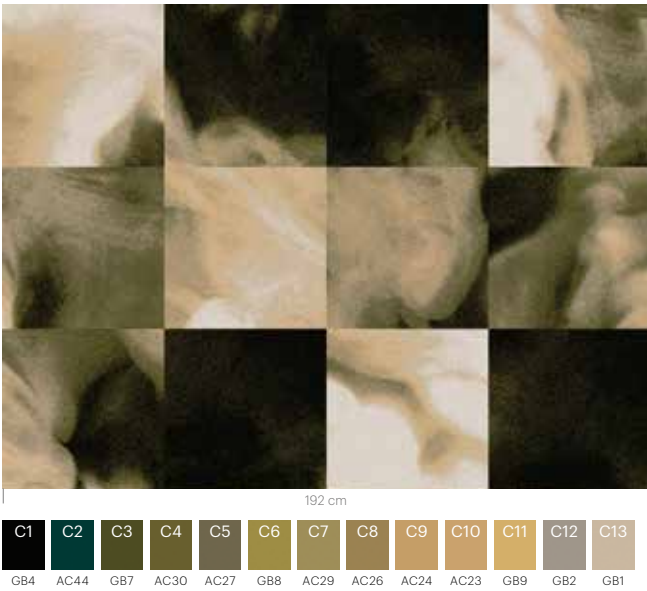
RF52952270 SMOKE
w: 390.1 cm x l: 585.1 cm

K5295



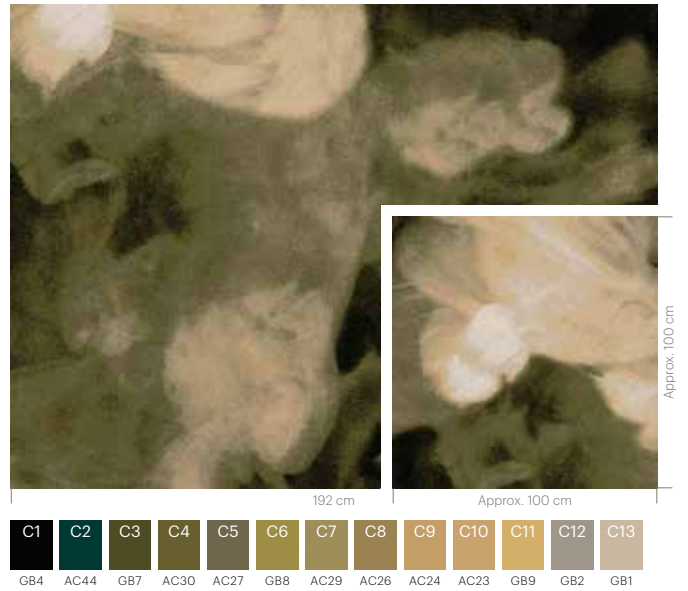
RFM52952272 SMOKE
Installation example 4 x 3 tiles

K5295



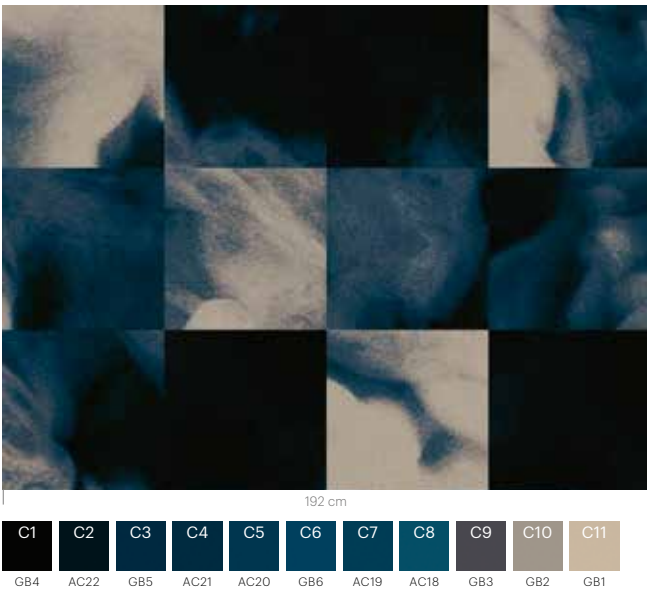
RF52952272 SMOKE
w: 390.1 cm x l: 585.1 cm

K5295



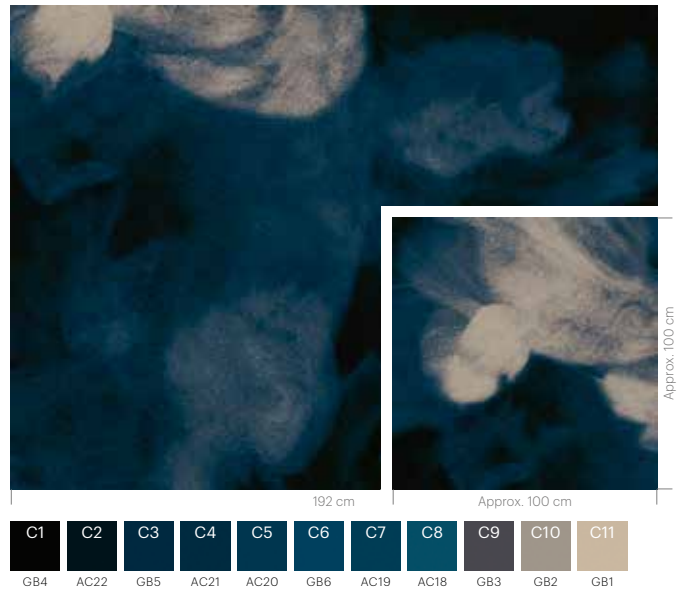
RFM52952271 SMOKE
Installation example 4 x 3 tiles

K5295

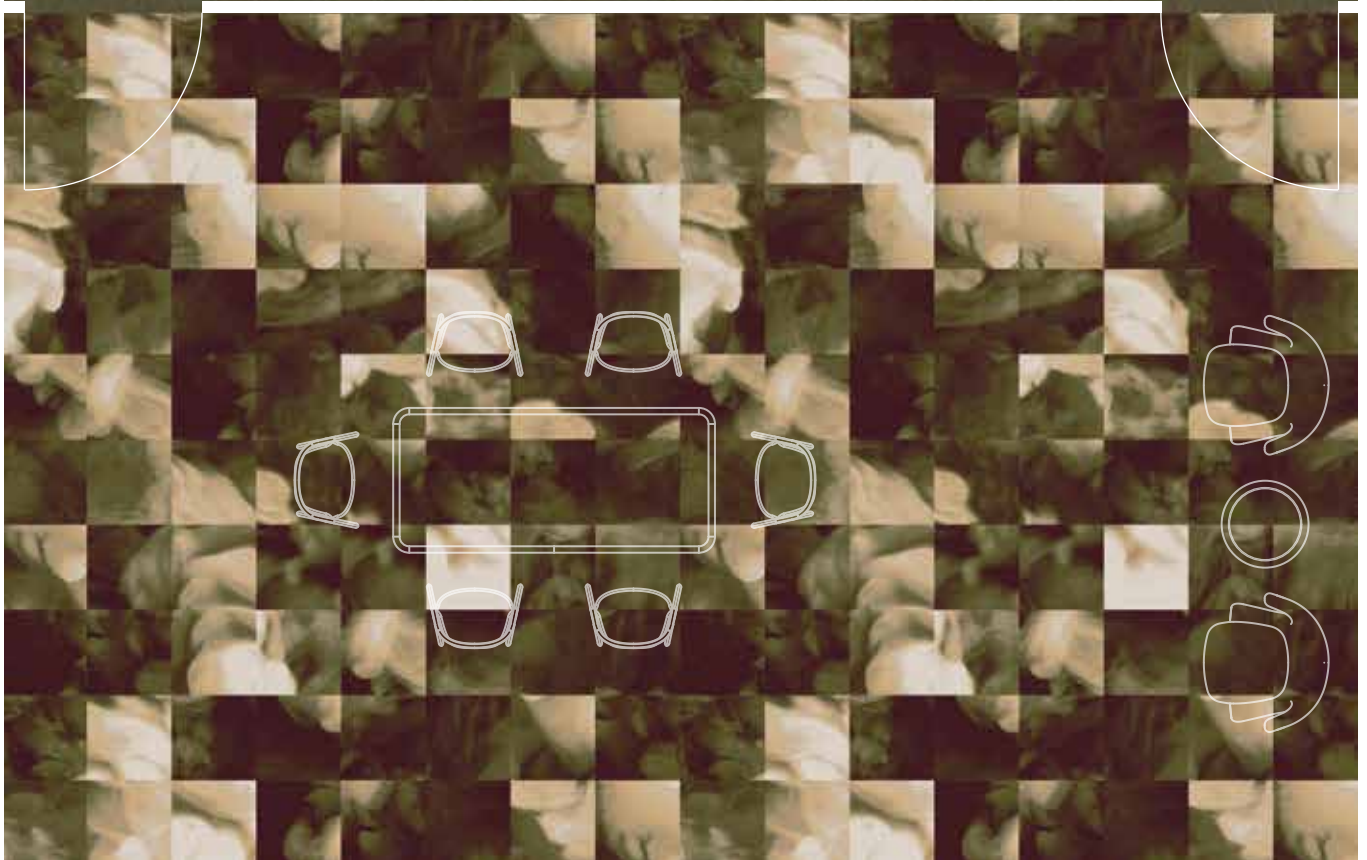
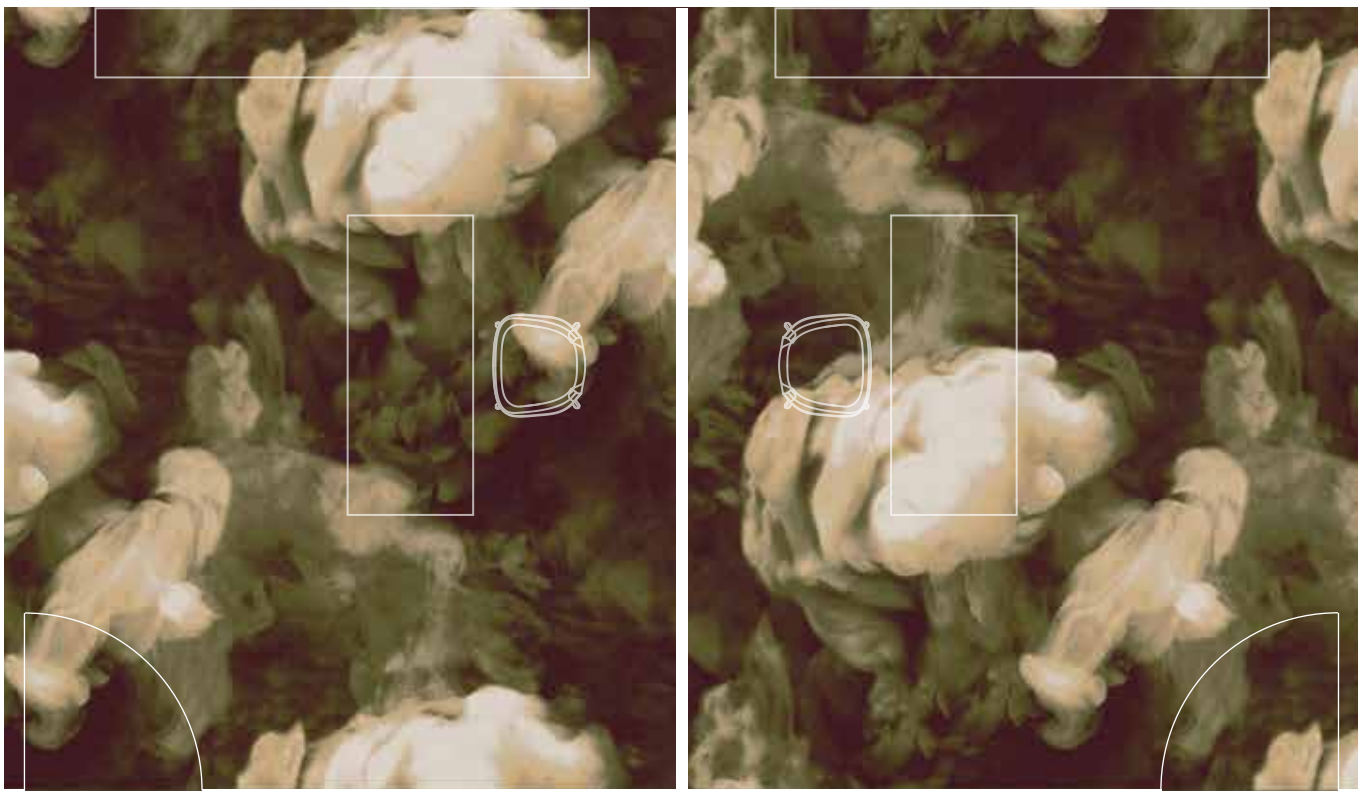


RF52952271 SMOKE
w: 390.1 cm x l: 585.1 cm

K5295



Floorscape inspiration



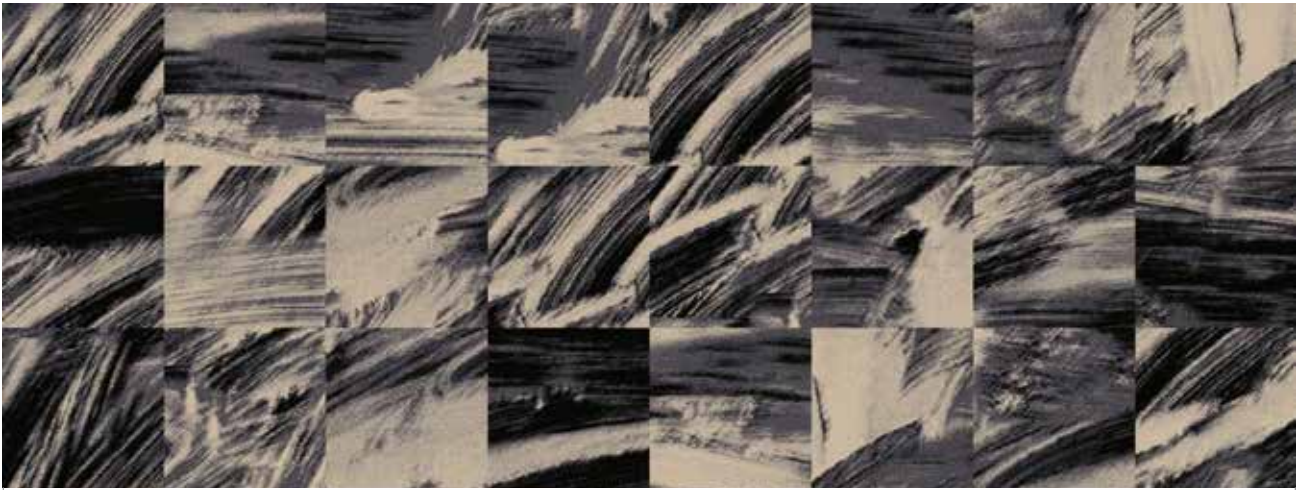
wash

The constant evolution and regeneration of people, places and ideas from a city in flux.



RFM52952273 WASH
Installation example 8 x 3 tiles

K5295

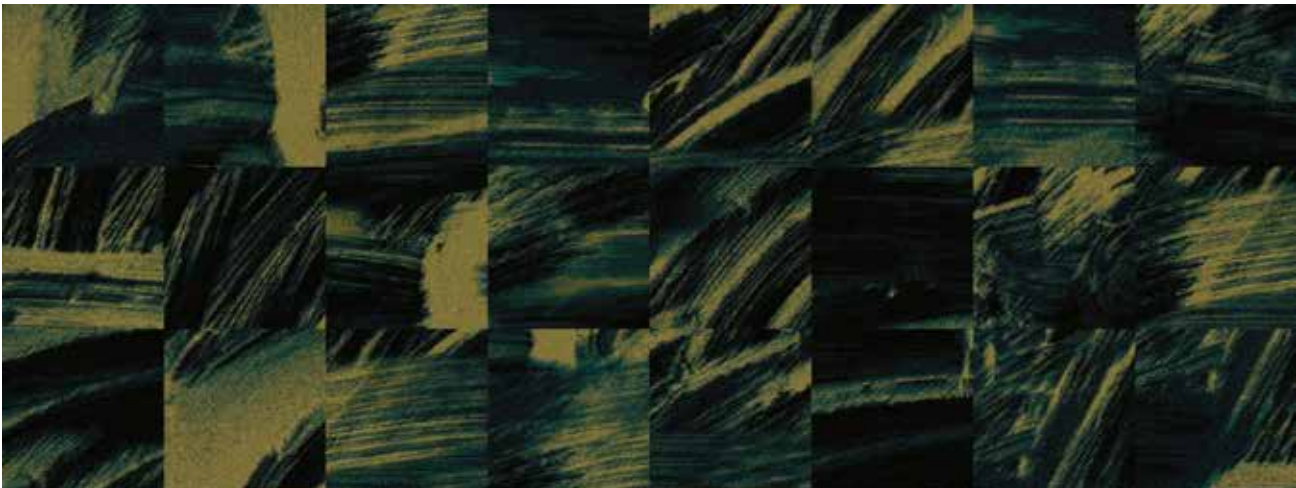


384 cm



RFM52952274 WASH
Installation example 8 x 3 tiles

K5295

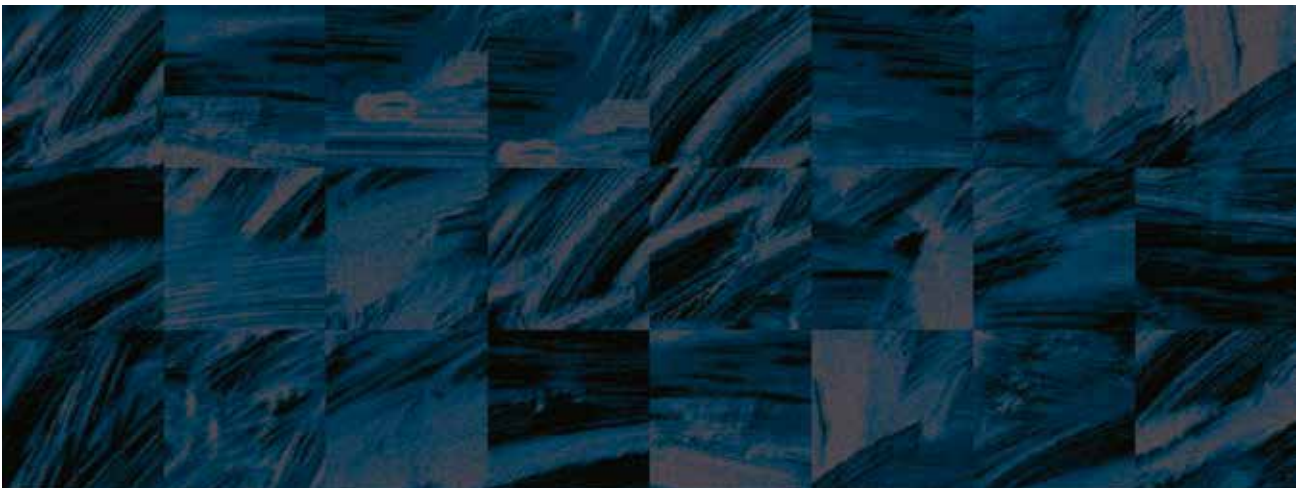


384 cm



RFM52952275 WASH
Installation example 8 x 3 tiles

K5295



384 cm



RF52952273 WASH
w: 390.1 cm x l: 508 cm

K5295



RF52952274 WASH
w: 390.1 cm x l: 508 cm

K5295



RF52952275 WASH
w: 390.1 cm x l: 508 cm

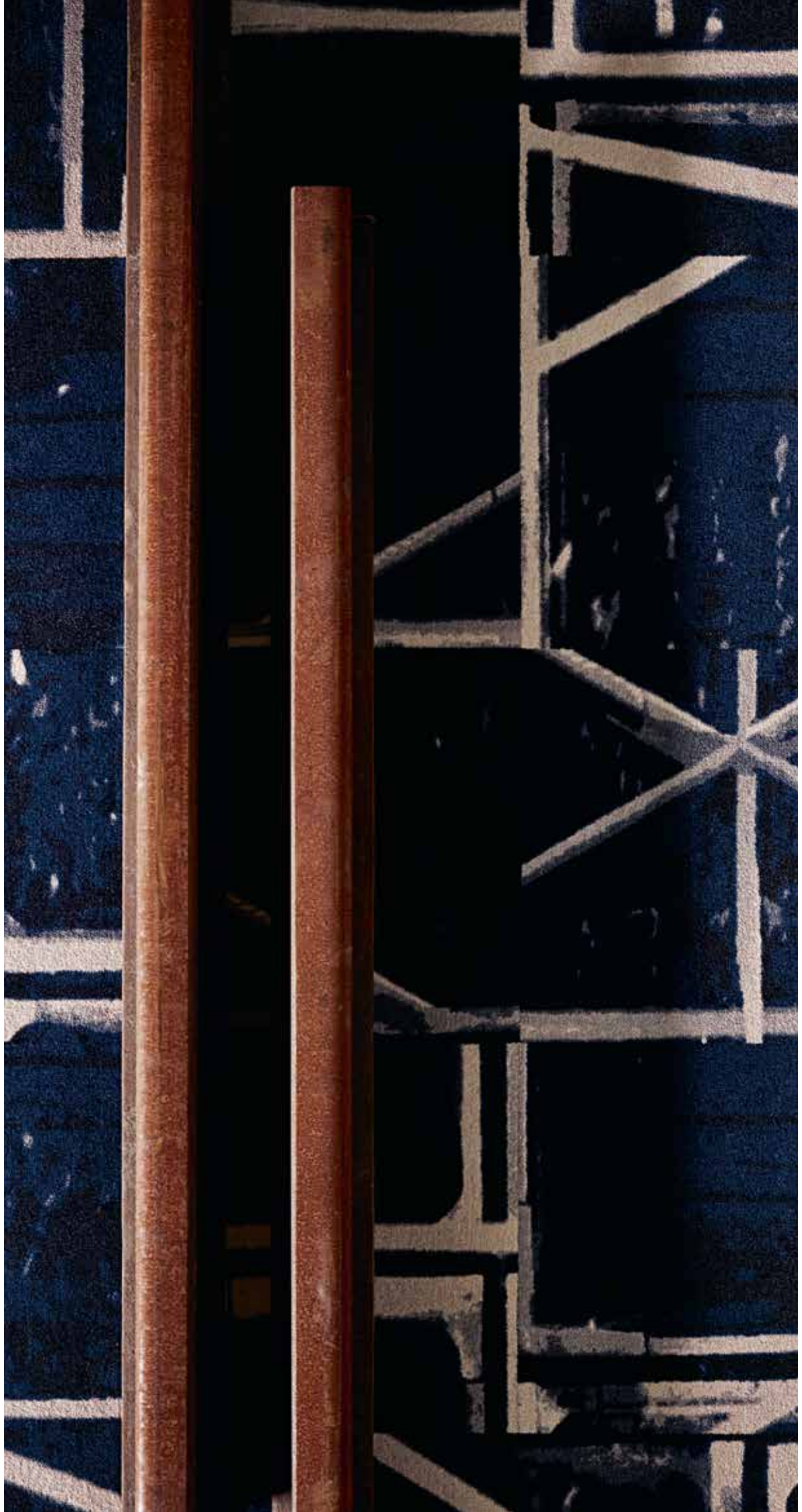
K5295



track

The central hub and the geometric pattern of travel with crossing tracks, networks and connections.

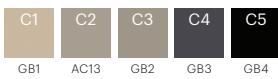
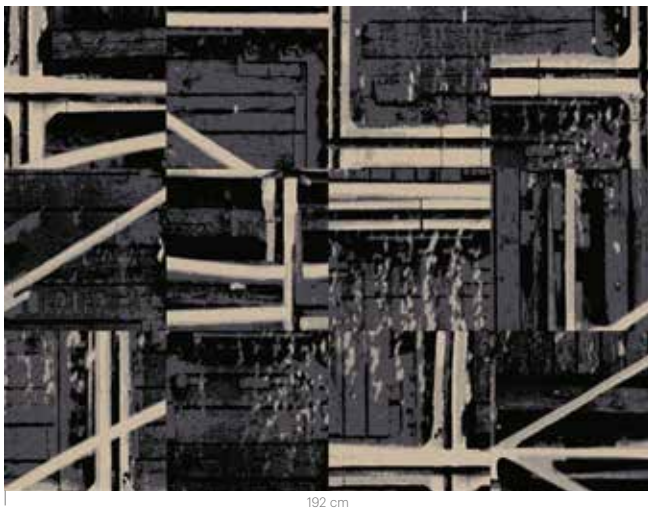




RFM52952277 TRACK

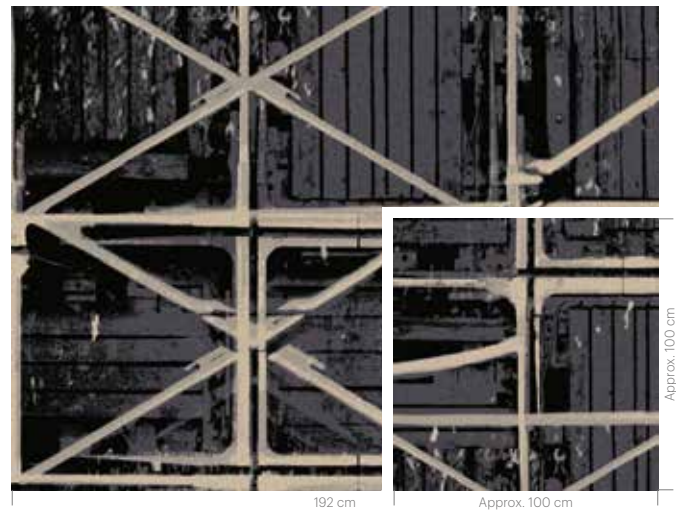
RFM52952276 TRACK
Installation example 4 x 3 tiles

K5295



RF52952276 TRACK
w: 390.1 cm x l: 390.1 cm

K5295



RFM52952277 TRACK
Installation example 4 x 3 tiles

K5295



RF52952277 TRACK
w: 390.1 cm x l: 390.1 cm

K5295



tide

The marks exposed from the motion, sediment and flow of the historic and tidal River Thames.



RFM52952278 TIDE
Installation example 4 x 3 tiles

K5295



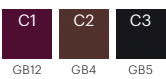
RF52952278 TIDE
w: 390.1 cm x l: 797.6 cm

K5295



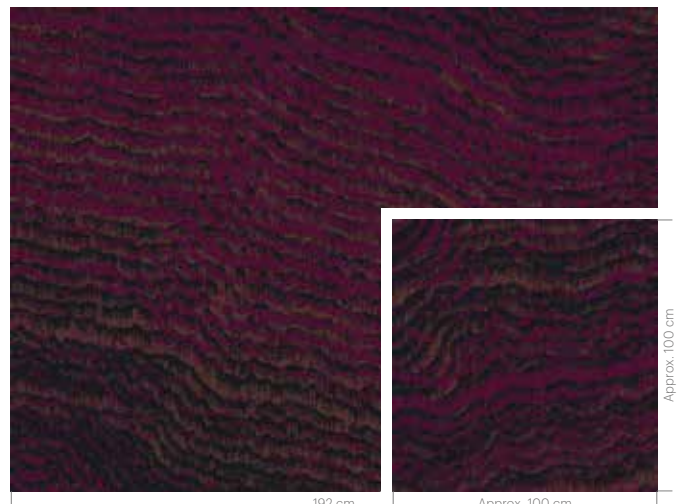
RFM52752286 TIDE
Installation example 4 x 3 tiles

K5275



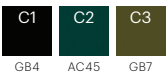
RF52752286 TIDE
w: 390.1 cm x l: 797.6 cm

K5275



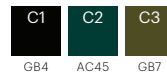
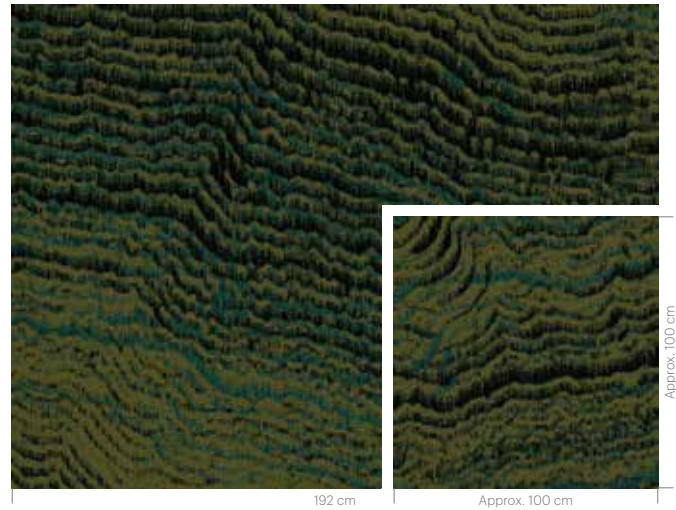
RFM52952280 TIDE
Installation example 4 x 3 tiles

K5295



RF52952280 TIDE
w: 390.1 cm x l: 797.6 cm

K5295



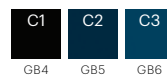
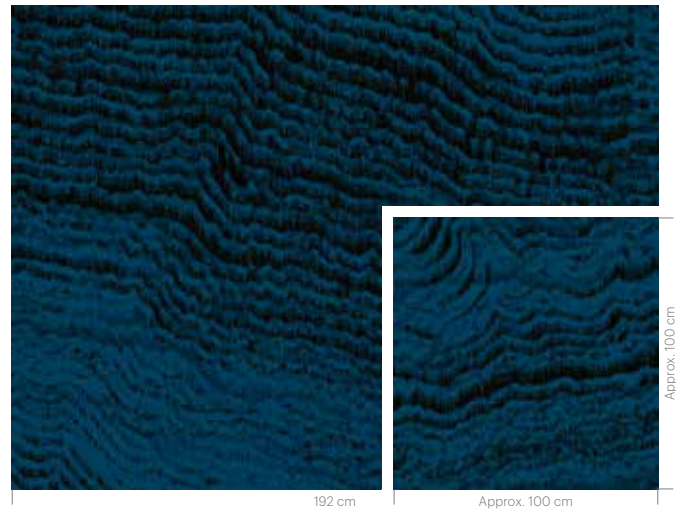
RFM52952279 TIDE
Installation example 4 x 3 tiles

K5295



RF52952279 TIDE
w: 390.1 cm x l: 797.6 cm

K5295



blur

The distorted city reflections in transient bits of water like puddles and fresh rainfall.



RFM52752287 BLUR
Installation example 8 x 3 tiles

K5275



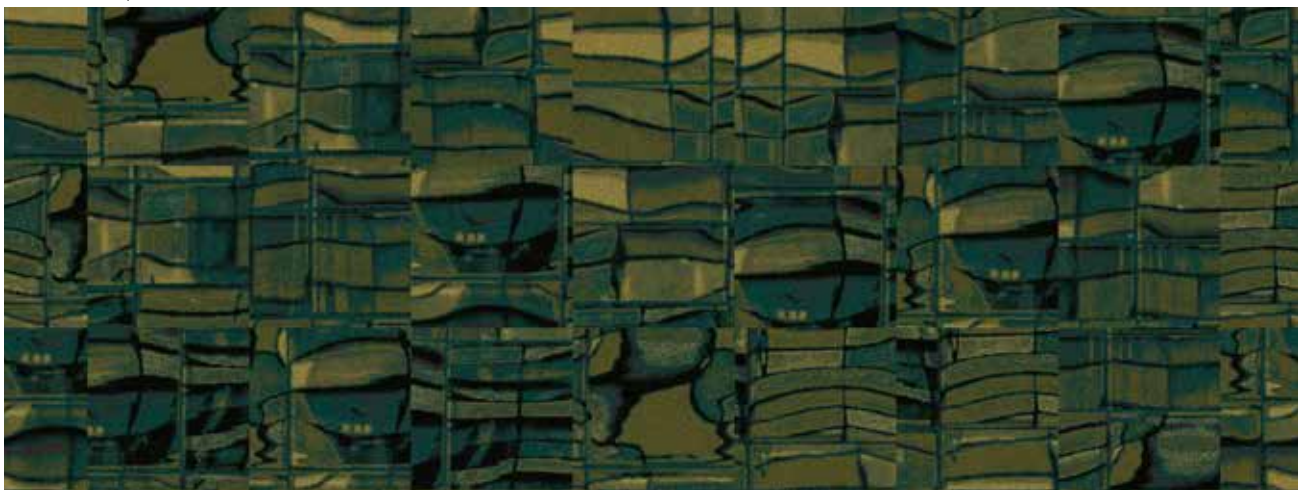
384 cm



No recolour possible

RFM52952281 BLUR
Installation example 8 x 3 tiles

K5295

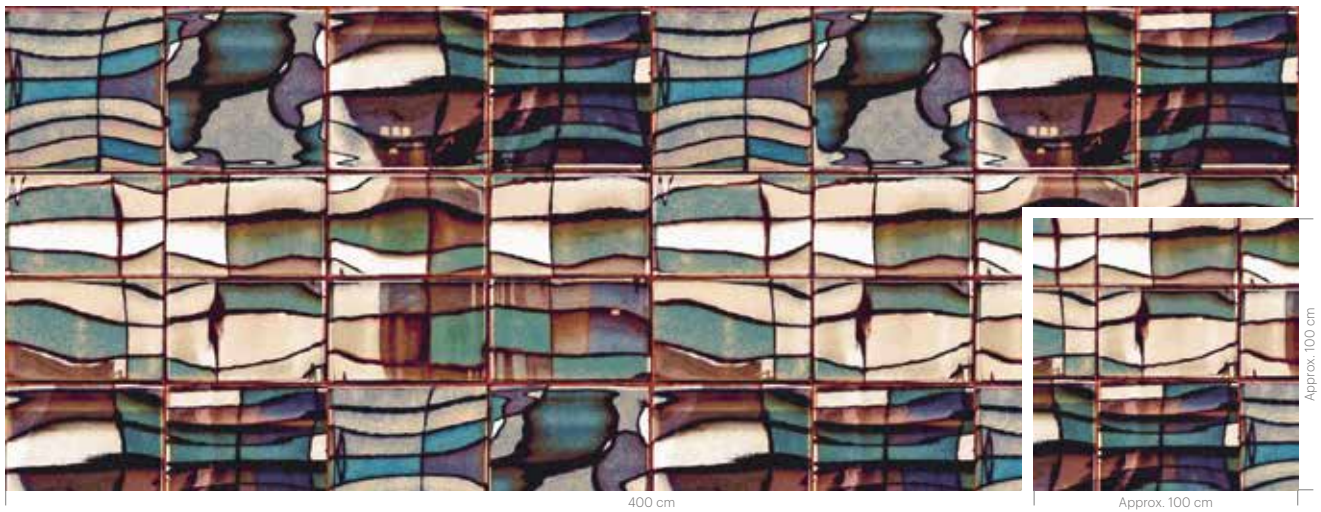


384 cm



RF52752287 BLUR
w: 390.1 cm x l: 227.1 cm

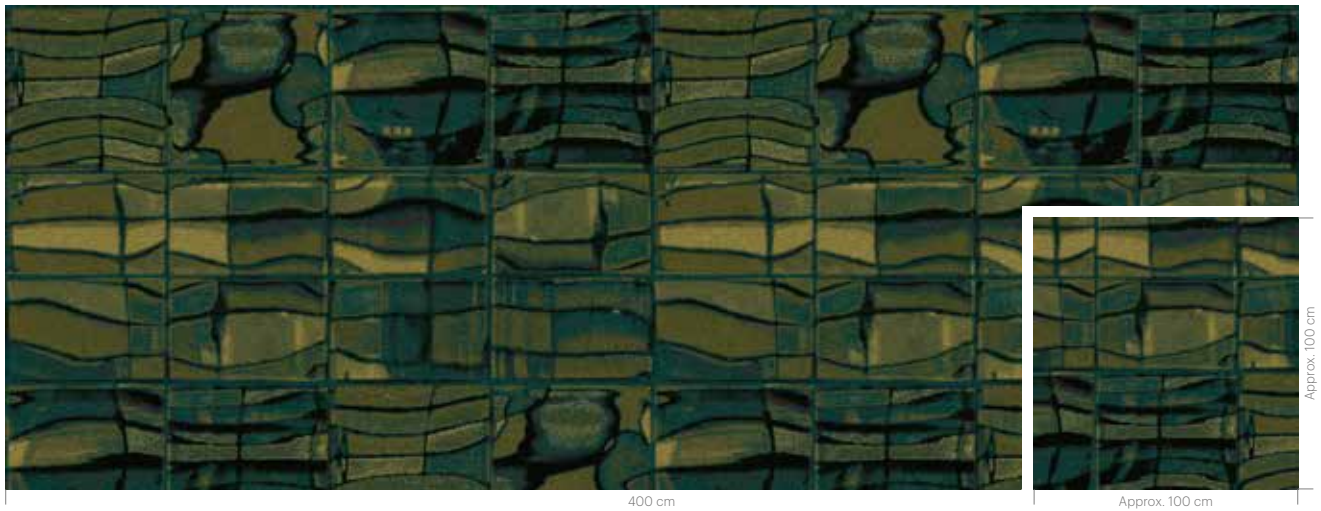
K5275



No recolour possible

RF52952281 BLUR
w: 195.1 cm x l: 218.2 cm

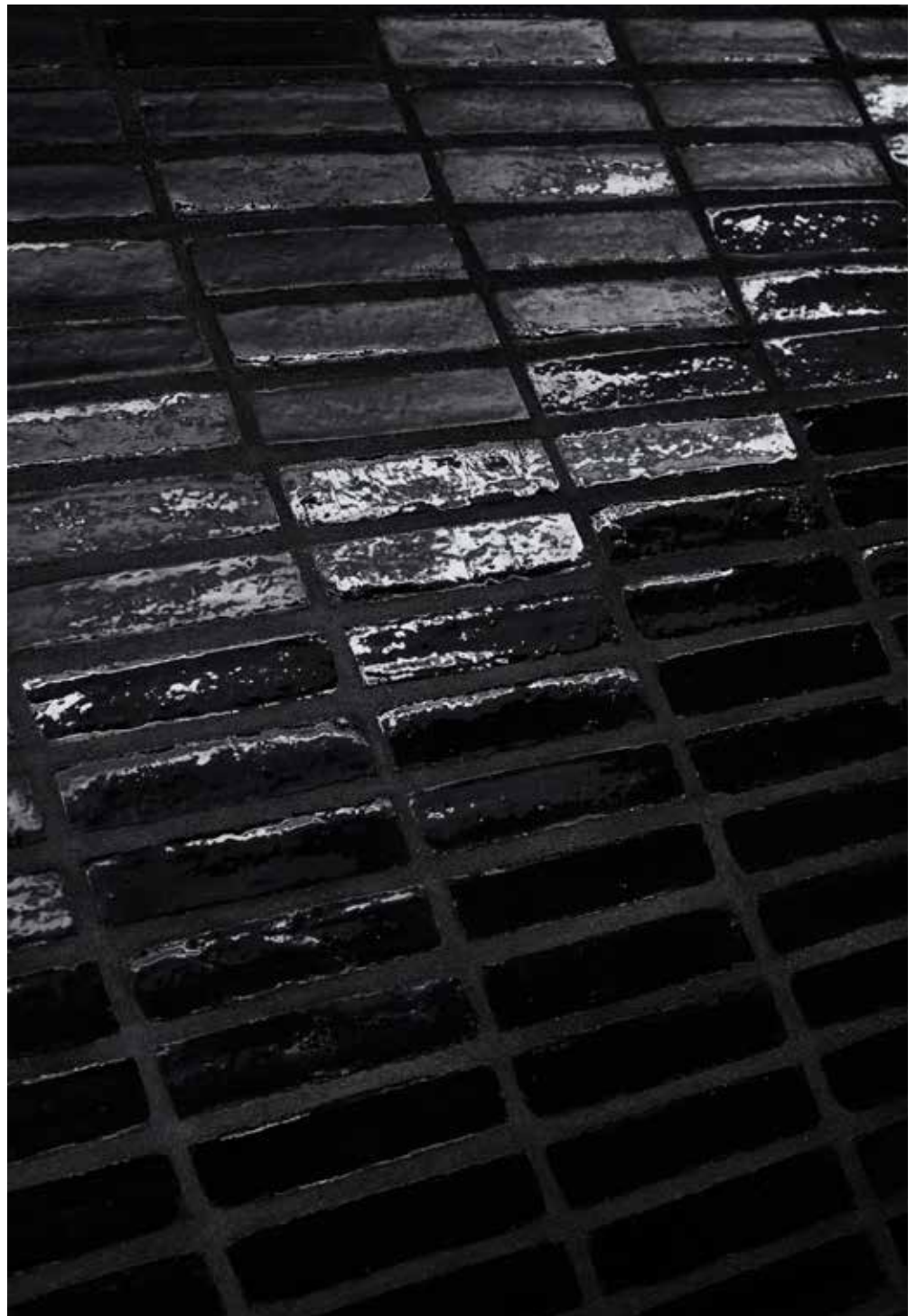
K5295

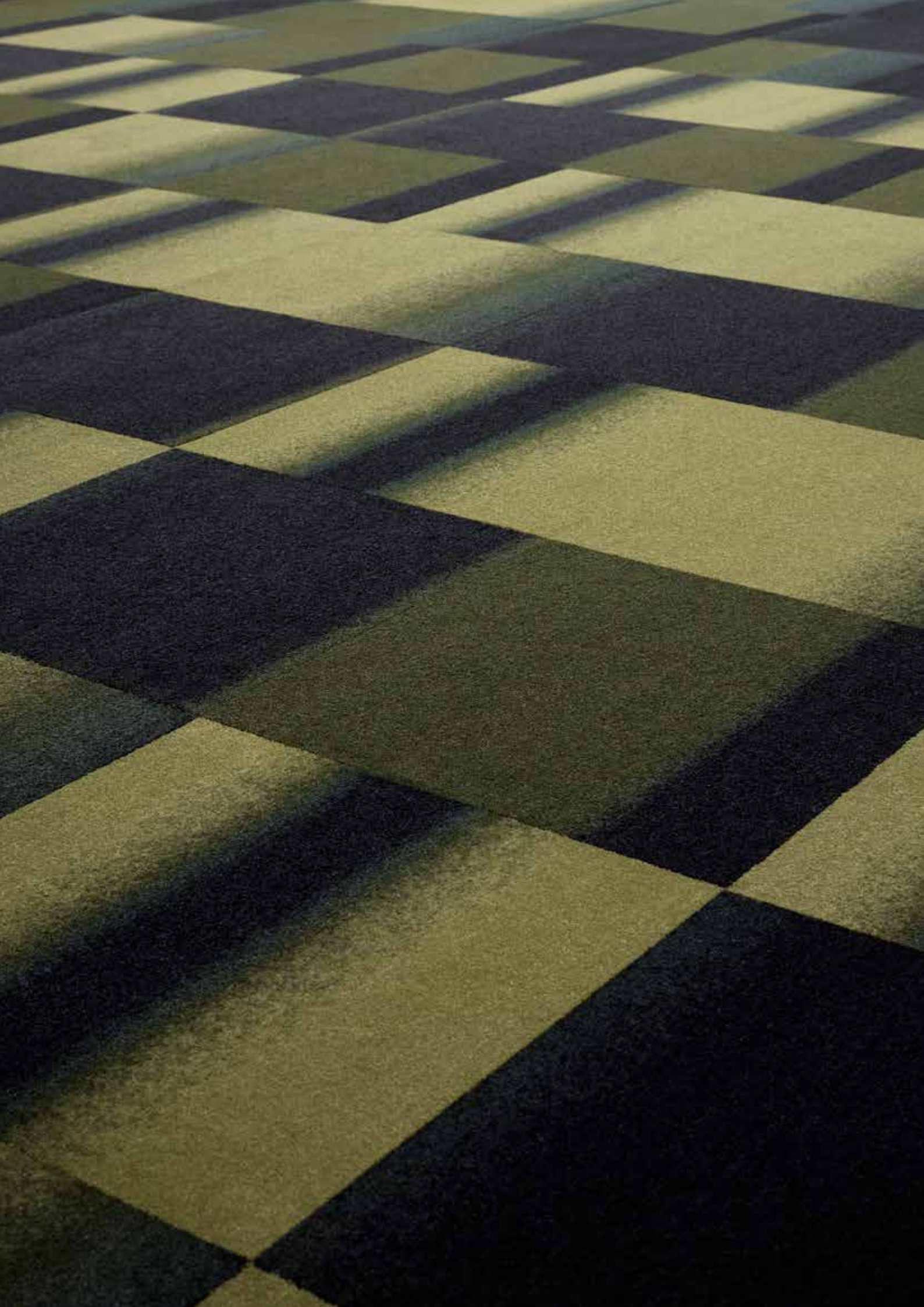


brick

Handmade and glazed bricks are the symbol and defining material of the London cityscape.

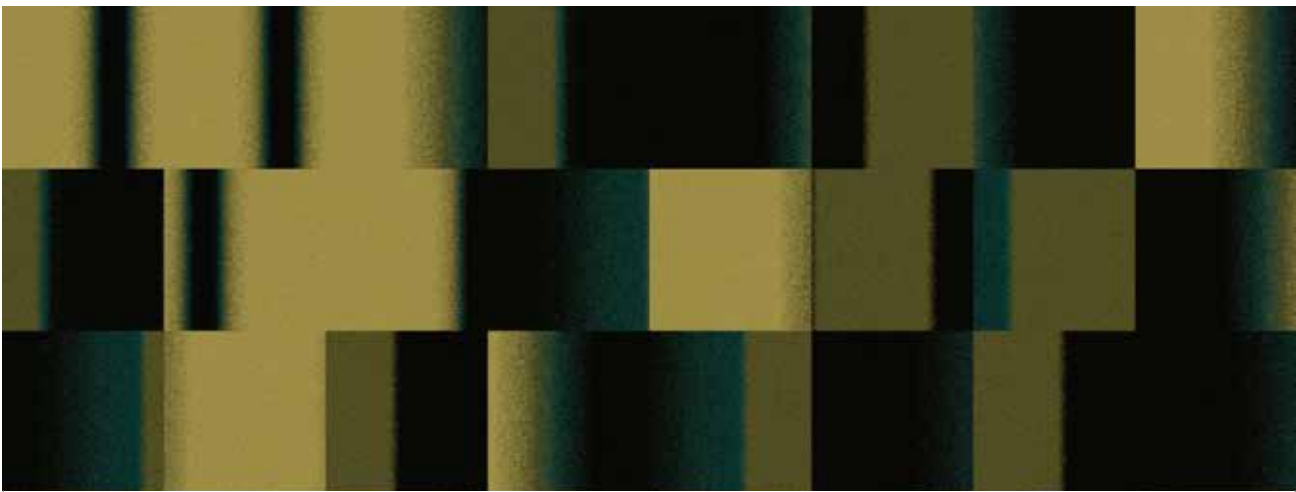






RFM52952282 BRICK
Installation example 8 x 3 tiles

K5295

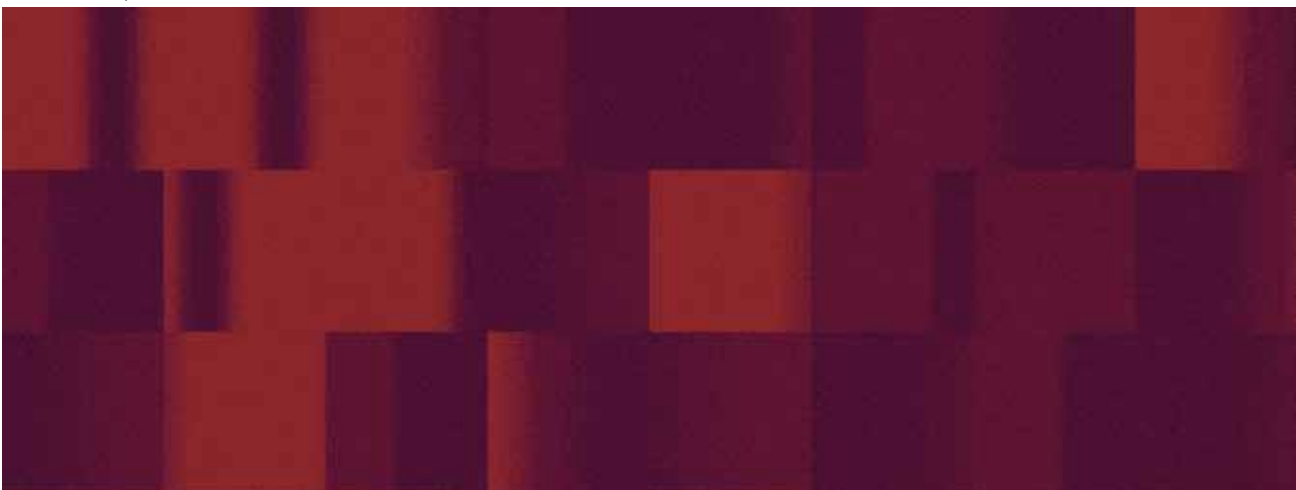


384 cm



RFM52752288 BRICK
Installation example 8 x 3 tiles

K5275

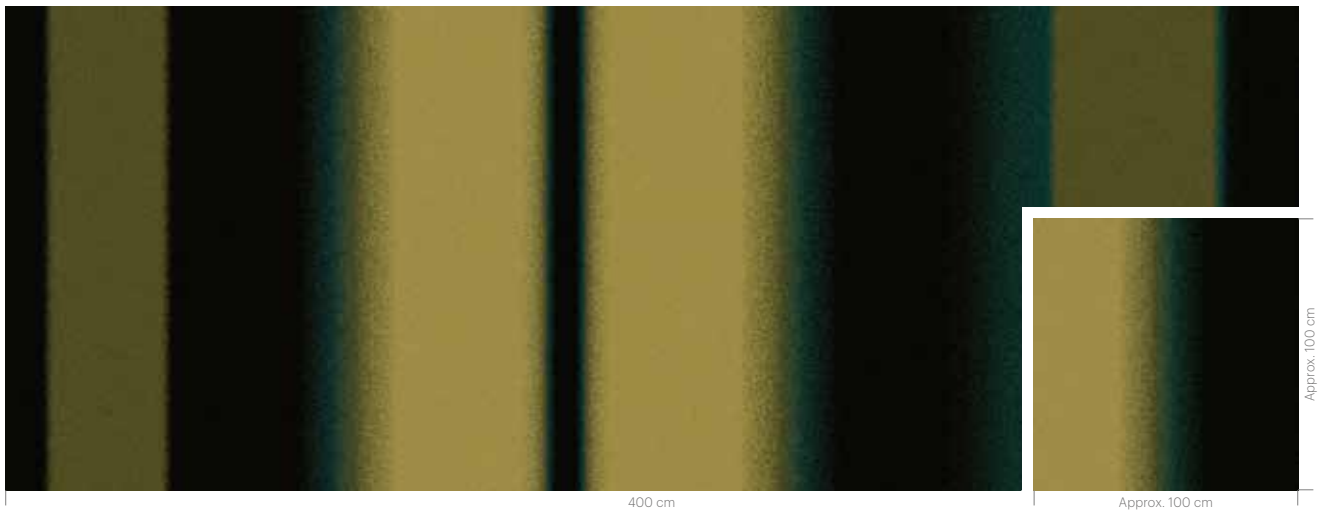


384 cm



RF52952282 BRICK
w: 390,1 cm x l: 48,8 cm

K5295



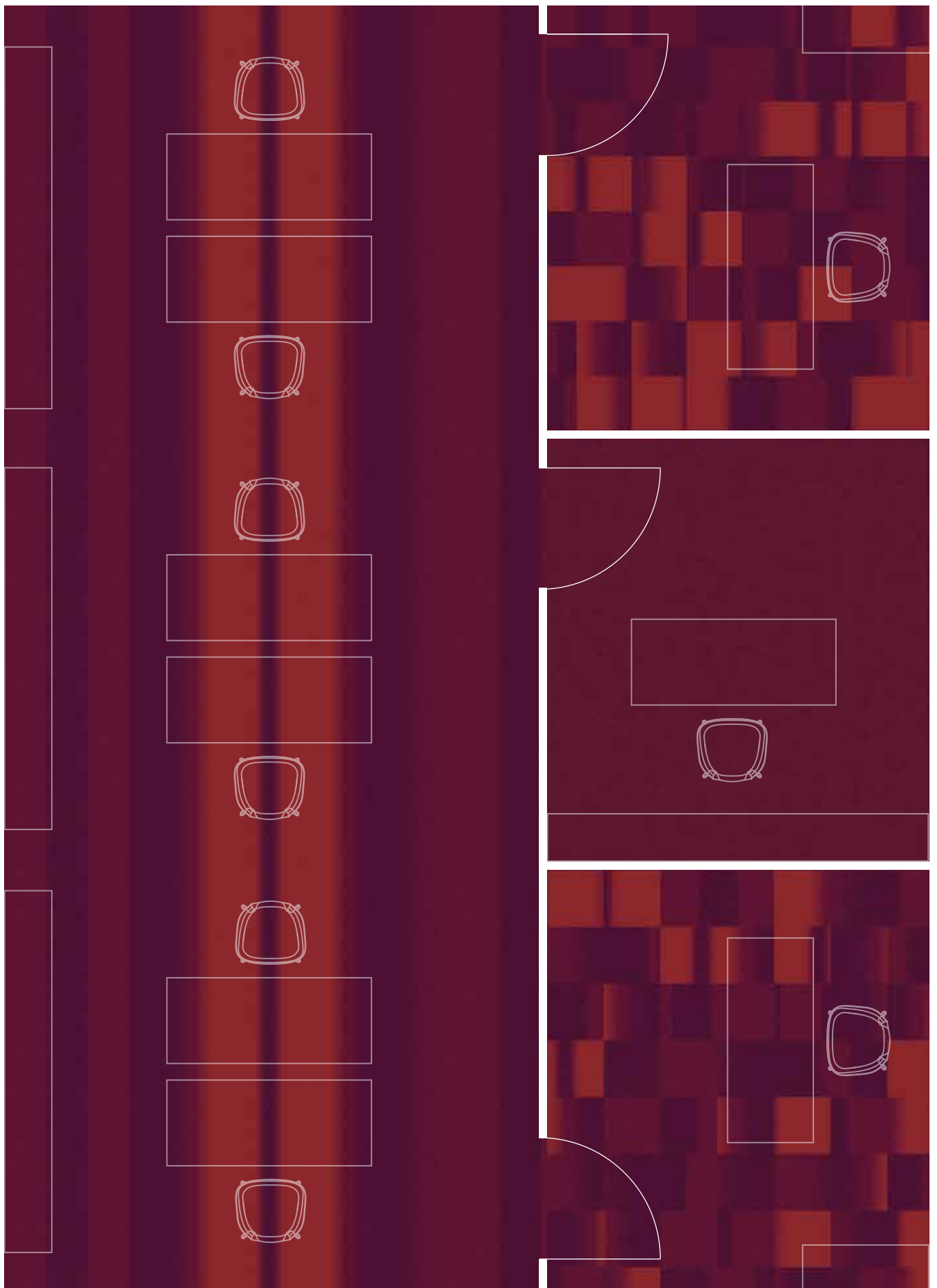
RF52752288 BRICK
w: 390,1 cm x l: 48,8 cm

K5275





Floorscape inspiration



crack

The beauty of deterioration and the imperfections of everyday surfaces.



RFM52952284 CRACK
Installation example 8 x 3 tiles

K5295



384 cm



RFM52952283 CRACK
Installation example 8 x 3 tiles

K5295



384 cm



RF52952284 CRACK
w: 390.1 cm x l: 260.1 cm

K5295



RF52952283 CRACK
w: 390.1 cm x l: 260.1 cm

K5295





Collection overview

smoke

PURPLE



RFM & RF52752289
Page 8-9

GREY



RFM & RF52952270
Page 10

GREEN



RFM & RF52952272
Page 10

BLUE



RFM & RF52952271
Page 10

wash

GREY



RFM & RF52952273
Page 14-15

GREEN



RFM & RF52952274
Page 14-15

BLUE



RFM & RF52952275
Page 14-15

track

GREY



RFM & RF52952276
Page 19

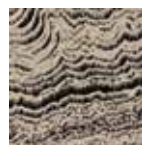
BLUE



RFM & RF52952277
Page 19

tide

GREY



RFM & RF52952278
Page 22

PURPLE



RFM & RF52752286
Page 22

GREEN



RFM & RF52952280
Page 23

BLUE



RFM & RF52952279
Page 23

blur

OILY



RFM & RF52752287
Page 26-27

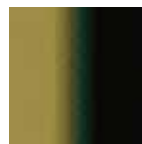
GREEN



RFM & RF52952281
Page 26-27

brick

GREEN



RFM & RF52952282
Page 32-33

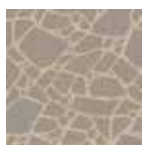
RUST



RFM & RF52752288
Page 32-33

crack

BEIGE



RFM & RF52952284
Page 38-39

GREY



RFM & RF52952283
Page 38-39

Colour palettes

colour palette 5220

GB1	A20041	GB2	A20042	GB3	A20043	GB4	K20044	GB5	K20045	GB6	K20046
GB7	K20047	GB8	K20048	GB9	K20049	GB10	K20050	GB11	K20051	GB12	K20012

Accent colours – for use in areas of max. 10 x 10 cm

AC43	AC44	AC45	AC46	AC47	AC48	AC49	AC50	AC51	AC52	AC53	AC54	AC55	AC56	AC57	AC58	AC59	AC60
AC61	AC62	AC63	AC64	AC65	AC66	AC67	AC68	AC69	AC70	AC71	AC72	AC73	AC74	AC75	AC76	AC77	

colour palette 5275

GB1	K28328	GB2	K28329	GB3	K28378	GB4	K28374	GB5	K28366	GB6	K28364
GB7	K28380	GB8	K28379	GB9	K27886	GB10	K28360	GB11	K28367	GB12	K28368

Accent colours – for use in areas of max. 10 x 10 cm

AC13	AC14	AC15	AC16	AC17	AC18	AC19	AC20	AC21	AC22	AC23	AC24	AC25	AC26	AC27	AC28	AC29	AC30
AC31	AC32	AC33	AC34	AC35	AC36	AC37	AC38	AC39	AC40	AC41	AC42	AC43	AC44	AC45	AC46	AC47	

colour palette 5285

GB1	K28521	GB2	K28522	GB3	K28523	GB4	K28524	GB5	K28525	GB6	H28526
GB7	H28527	GB8	K28528	GB9	H28529	GB10	K28530	GB11	H28531	GB12	K20012

Accent colours – for use in areas of max. 10 x 10 cm

AC13	AC14	AC15	AC16	AC17	AC18	AC19	AC20	AC21	AC22	AC23	AC24	AC25	AC26	AC27	AC28	AC29	AC30
AC31	AC32	AC33	AC34	AC35	AC36	AC37	AC38	AC39	AC40	AC41	AC42	AC43	AC44	AC45	AC46	AC47	

colour palette 5295

GB1	K28601	GB2	K28602	GB3	K28603	GB4	K20012	GB5	H28605	GB6	K28606
GB7	K28607	GB8	K28608	GB9	K28609	GB10	K28610	GB11	H28611	GB12	H28632

Accent colours – for use in areas of max. 10 x 10 cm

AC13	AC14	AC15	AC16	AC17	AC18	AC19	AC20	AC21	AC22	AC23	AC24	AC25	AC26	AC27	AC28	AC29	AC30
AC31	AC32	AC33	AC34	AC35	AC36	AC37	AC38	AC39	AC40	AC41	AC42	AC43	AC44	AC45	AC46	AC47	

Recolour options

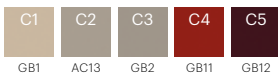
SELECT DESIGN

RF52952276



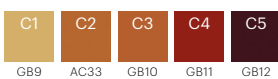
CHANGE COLOUR OF BACKGROUND (CHOOSE BETWEEN GB1-GB12)

EF12782-100



CHANGE PATTERN COLOUR (CHOOSE BETWEEN GB1-GB12 AND ACCENT COLOURS)

EF12782-101

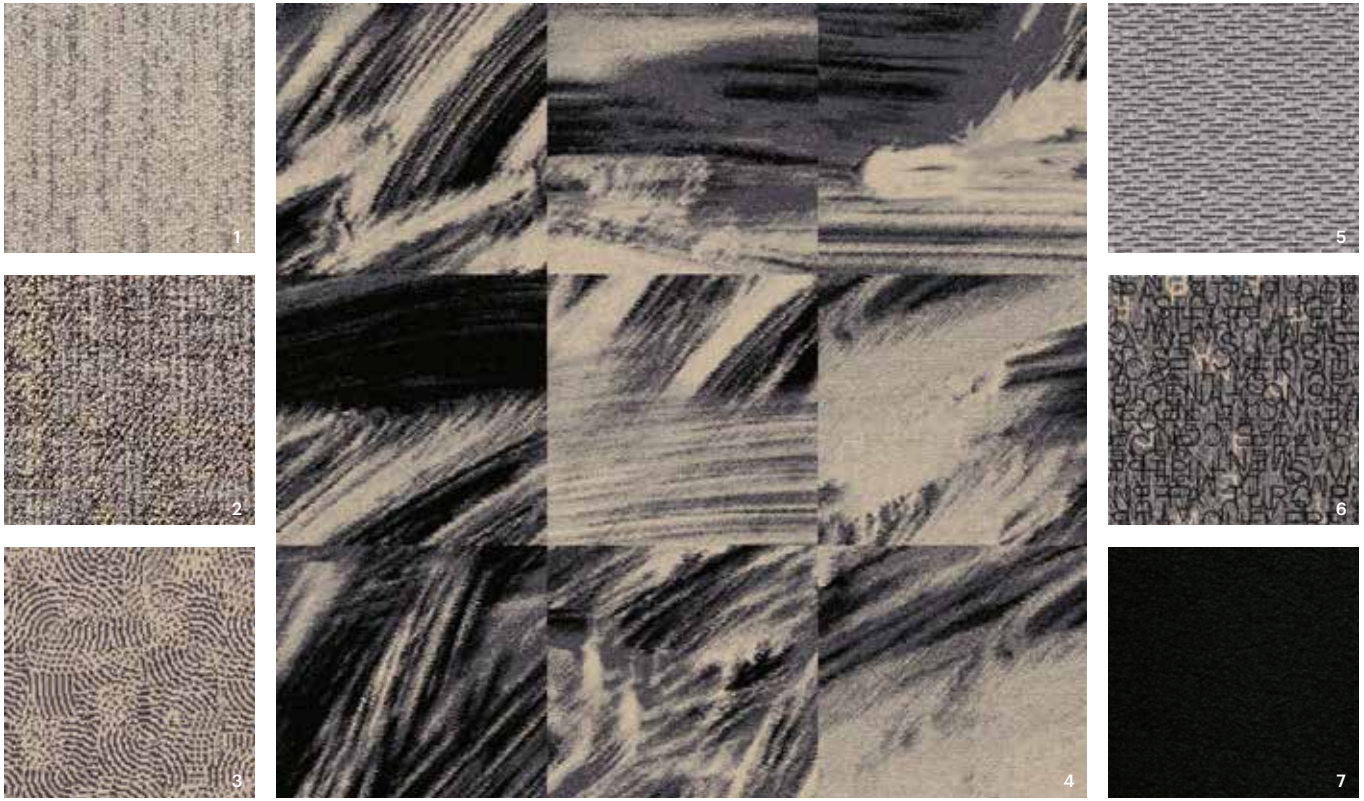













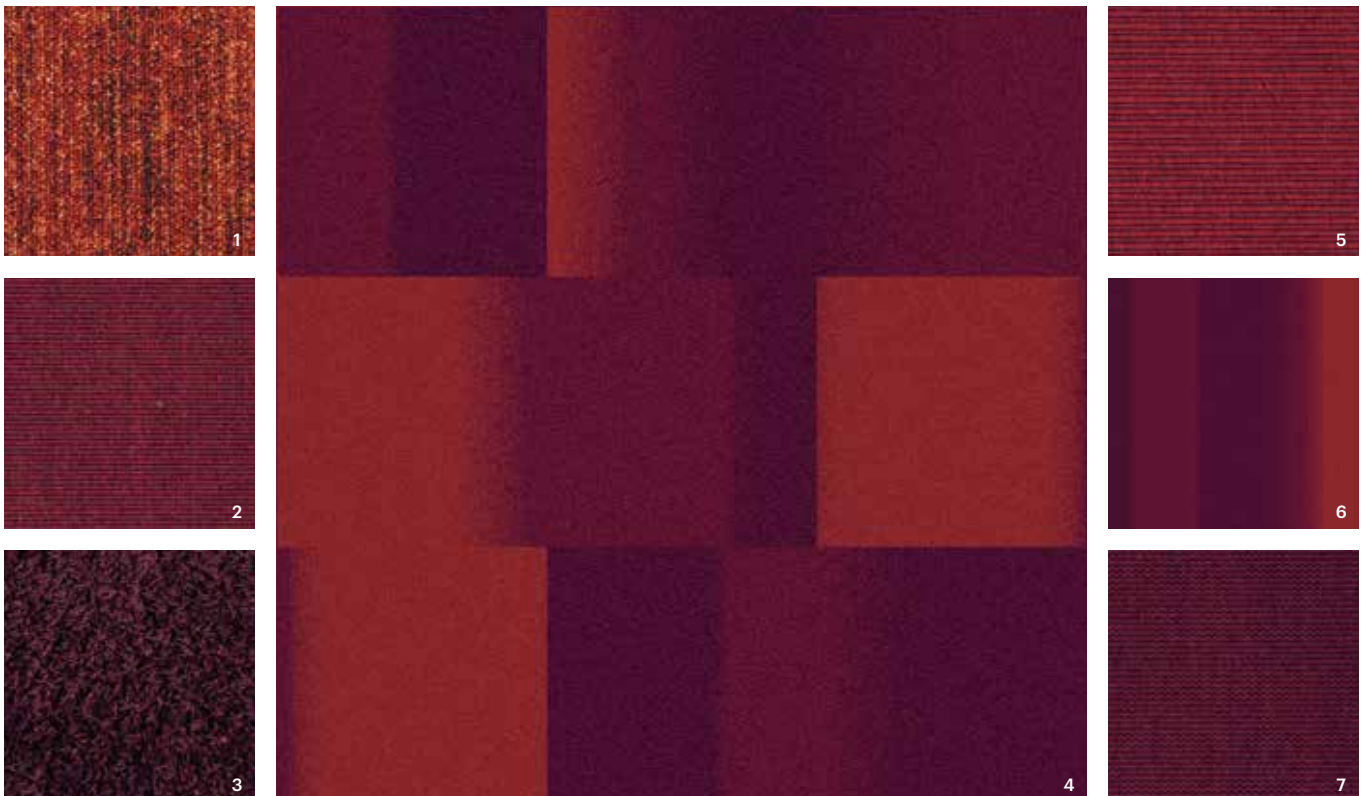


Collection mix inspiration

The designs of the Industrial Landscape collection can stand alone or work in the company of other ege collections. Find inspiration in the creative combinations below and mix different patterns, qualities and colours to define areas, move or guide people or just because it looks great.



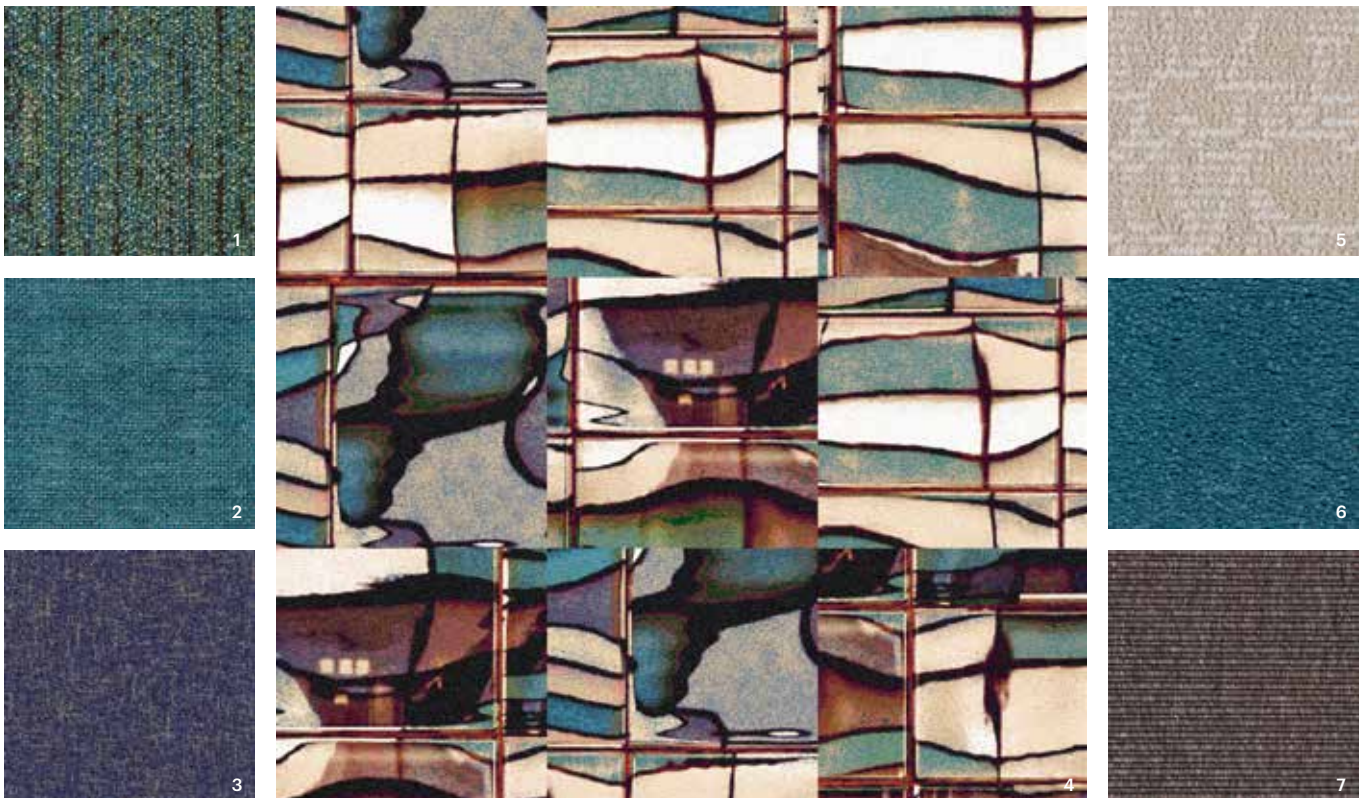
1 REFORM FOSS 076273048  / 0800730  2 REFORM MEMORY 076701548  / 0768015  3 METROPOLITAN RF5295617  4 INDUSTRIAL LANDSCAPE RFM52952273  5 EPOCA RASP 0807710  6 CONTRAST RFM52956454  7 EPOCA TEXTURE 2000 0706800 



1 REFORM FOSS 076244048  / 0800440  2 EPOCA PROFILE 060347548  3 SOFT DREAMS LUX 0729495  4 INDUSTRIAL LANDSCAPE RFM52752288  5 EPOCA PRO 0686470  6 INDUSTRIAL LANDSCAPE RF52752288  7 EPOCA KNIT 074749548 



1 CANVAS COLLAGE RF52752808 2 EPOCA TWIST 073387048 3 EPOCA SILKY CONTRACT 0575170 4 INDUSTRIAL LANDSCAPE RFM52752289 5 INDUSTRIAL LANDSCAPE RF52752289 6 CONTRAST RFM52756246 7 EPOCA CLASSIC 073515548



1 REFORM FOSS 076256048 / 0800560 2 CANVAS COLLAGE RF52752810 3 SENSE RF52751372 4 INDUSTRIAL LANDSCAPE RFM52752287 5 UNA CRYSTALLINE 080823048 6 EPOCA TEXTURE 2000 0706555 7 EPOCA PRO 0686165



All the details

Technical specifications

The Industrial Landscape collection features seven design themes. Each of them is available as carpet tiles as well as broadloom creating different expressions within the same design theme. Tiles and broadloom can be mixed together or combined with other ege collections to get a truly unique flooring solution for not only one room but also for projects with several spaces.

- 7 designs
- Recolour options (see page 43)
- Tiles and broadloom
- 4 standard qualities available for tiles (see specifications on page 49)
- 8 standard qualities available for broadloom (see specifications at egecarpets.com)
- Minimum order from 40 m² for tiles
- No minimum order requirements for broadloom
- Undisputed performance standard EN 1307
- Performance classification to fit any need; extra heavy use
- 24-hour sample service
- Dispatch within 2 weeks from receipt of order

The green choice

All carpet tiles from the Industrial Landscape collection have the patented Ecotrust felt backings. This is an innovative production technique turning used water bottles into a soft, yet strong and highly durable PET felt that also holds great acoustic performance. The Ecotrust backing is also Cradle to Cradle™ certified signifying that it is one of the most environmentally friendly tile backings on the market.

Combined with the Highline 1100 face quality that is made of regenerated and regenerable ECONYL® yarns, the product is a 100% green choice. ECONYL® yarns are produced from used fishing nets that are reborn as strong, hardwearing yarns for textile flooring.



Identification characteristics	Standard	Highline 80/20 1400 Ecotrust	Highline 1100 Ecotrust	Highline 630 Ecotrust	Highline Loop Ecotrust
Construction	ISO 2424	Tufted cut pile	Tufted cut pile	Tufted cut pile	Tufted loop pile
Pile material	DIR 96/73, 96/74	80% wool, 20% polyamide	100% regenerated ECONYL® polyamide	100% polyamide	100% polyamide
Colouration	-	Millitron	Millitron	Millitron	Millitron
Backing	eTL	Ecotrust 350, 100% recycled	Ecotrust 350, 100% recycled	Ecotrust 350, 100% recycled	Ecotrust 350, 100% recycled
Dimensions	ISO 3018	48x48 / 96x96 cm*	48x48 / 96x96 cm*	48x48 / 96x96 cm*	48x48 / 96x96 cm*
Gauge	ISO 2424	1/8	1/8	1/10	1/10
Total thickness	ISO 1765	Approx. 10.5 mm	Approx. 9.0 mm	Approx. 8.0 mm	Approx. 8.0 mm
Surface pile thickness	ISO 1766	Approx. 6.0 mm	Approx. 5.5 mm	Approx. 4.0 mm	Approx. 4.0 mm
Tufts	ISO 1763	Approx. 139,000 per m ²	Approx. 198,000 per m ²	Approx. 222,000 per m ²	Approx. 153,000 per m ²
Total carpet weight	ISO 8543	Approx. 3,350 g/m ²	Approx. 3,050 g/m ²	Approx. 2,600 g/m ²	Approx. 2,700 g/m ²
Pile yarn weight	eTL	Approx. 1,400 g/m ²	Approx. 1,100 g/m ²	Approx. 630 g/m ²	Approx. 680 g/m ²
Surface pile density	ISO 8543	Approx. 0.160 g/cm ³	Approx. 0.165 g/cm ³	Approx. 0.120 g/cm ³	Approx. 0.115 g/cm ³
edge soil protection	-	Yes	Yes	Yes	Yes
Biocidal treatment	-	Contains a preservative to control microbiological deterioration	-	-	-

Performance characteristics

Performance areas	EN 1307	Class 33 – Commercial – Heavy	Class 33 – Commercial – Heavy	Class 33 – Commercial – Heavy	Class 33 – Commercial – Heavy
Castor chair suitability	EN 985	-	Continuous use	Continuous use	Continuous use
Suitability for use on stairs	EN 1963	Yes	Yes	Yes	Yes
Static control	eTL	Permanently antistatic	Permanently antistatic	Permanently antistatic	Permanently antistatic
Suitability for under floor heating	ISO 8302	Yes	Yes	Yes	Yes
Acou. insu. from impact noise	EN ISO 717-2/eTL	28 dB	26 dB	26 dB	26 dB
Acoustical absorption	ISO 354/eTL	0.35 aW	0.25 aW	0.25 aW	0.25 aW

Safety and environmental characteristics

Fire classifications	DIBT AbZ. no EN 13501-1 Euroclass IMO MK Godkendelse VKF/AEAI	Z-156.601-479 B _{fl} -s1 Certified Approved Approved	Z-156.601-441 B _{fl} -s1 - Approved Approved	Z-156.601-441 B _{fl} -s1 - Approved Approved	Z-156.601-440 C _{fl} -s1 - Approved Approved
Indoor climate	BASTA DIM Certificate Emissions dans l'air intérieur GECA Green Label Plus	Registered No. 006 A+/A+ - Approved	Registered No. 006 A+/A+ Approved Approved	Registered No. 006 A+/A+ Approved Approved	Registered No. 006 A+/A+ Approved Approved
Environmental profile	Bre BREEAM-NOR Cradle to Cradle™	- - Bronze certified	ENP 434 With EcotrustA backing Bronze certified	ENP 434 - Bronze certified	ENP 434 - Bronze certified
CE Labeling	EN 14041	Certified	Certified	Certified	Certified

Manufacturer characteristics

Quality management	ISO 9001	Audited and verified by Bureau Veritas Certification
Environmental management	ISO 14001	Audited and verified by Bureau Veritas Certification
Eco management	EMAS	Audited and verified by Bureau Veritas Certification
Occupational Health & Safety	DS/OHSAS 18001	Audited and verified by Bureau Veritas Certification
Corporate Social Responsibility	DS 49001	Audited and verified by Bureau Veritas Certification
Carpet Recycling UK	Member	www.carpetrecyclinguk.com

For full technical specs and installation and maintenance guides see egecarpets.com.

*Please note extra surcharge for 96x96 cm tiles. The Industrial Landscape collection is also available as broadloom. Please see egecarpets.com for product data.

eTL = internal result from the ege Test Laboratory (ISO 9001 certified).

Due to continuous development of products and testing procedures any above declaration is subject to change without prior notification.



BY APPOINTMENT TO THE ROYAL DANISH COURT

ege carpets a/s

thanks

Tom Dixon, Creative Director · Helene Bangsbo Andersen, Head of Creative Tom Dixon · Micaela Silva, Designer Tom Dixon · Karen Nybo, Designer ege · Susanne Lykke, Visual Communication Manager ege · Mikkel Mortensen, Photographer Yellows · Lene Ronfeldt, Interior Stylist



ege[®]

THE URGE TO EXPLORE SPACE

www.egecarpets.com